

# *Case Study - Bagtor House*

*Domestic micro-hydro  
installation*

*55m head*

ern Renewable Energy

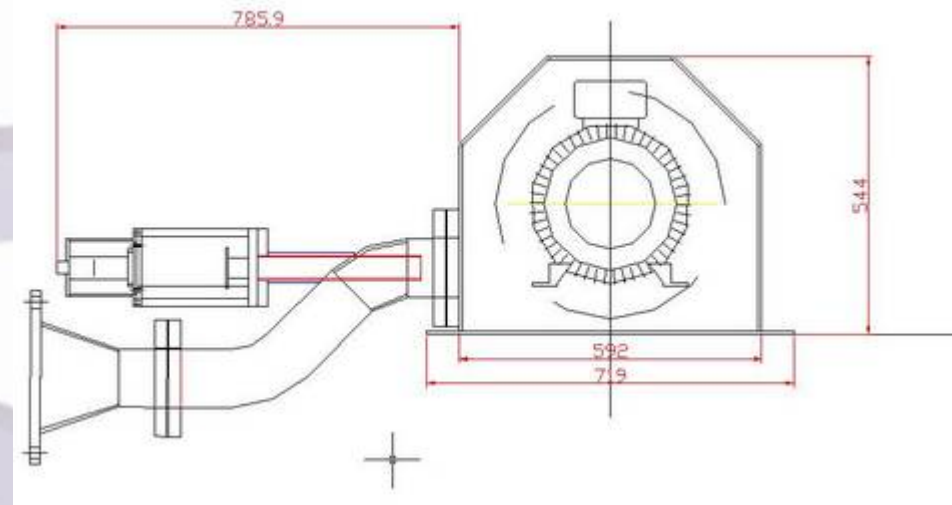
## Case Study:

Site: Bagtor House  
Turbine: Single Jet Pelton  
Power: 5.5kW  
Head: 55m

Western Renewable Energy (WRE)  
carried out work from feasibility  
forward to commissioning

Site specific issues include:

- High head – 55m
- Small flow
- Pipe route through stony woodland
- System a rebuild of an old system



As the catchment was small physical measurement was carried out in addition to computer analysis. Existing derelict powerhouse and intake tank to be repaired and reused



New pipeline installed following old route where possible, using fusion welded plastic pipe



# Pelton turbine



# WRE coanda screen



